



GMT MONTHLY MEMBERSHIP PROGRESS REPORT

Results as of: 6/30/2020

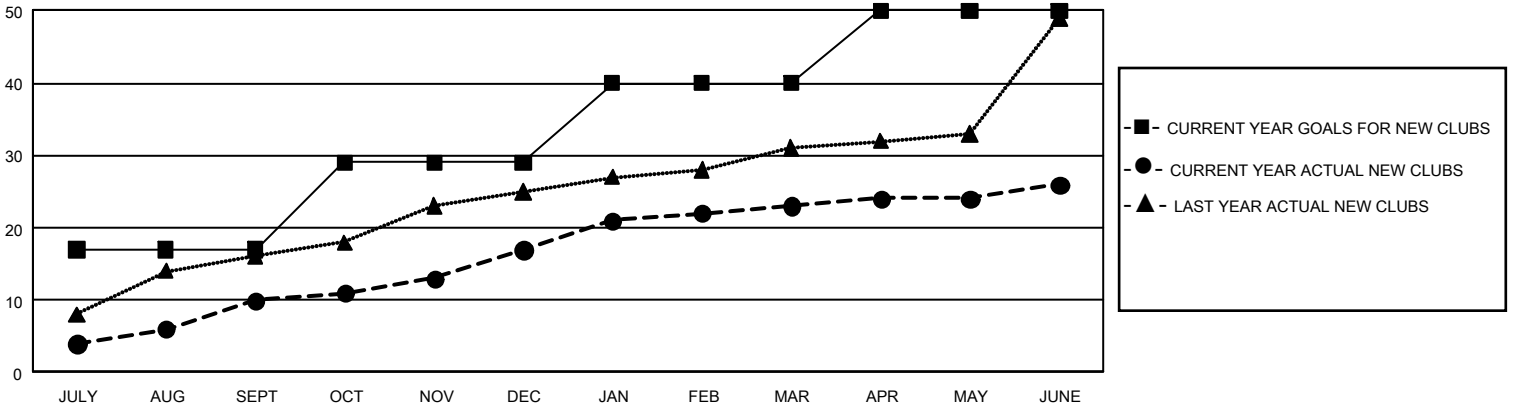
GMT Constitutional Area 6, Group H

GMT: OPEN

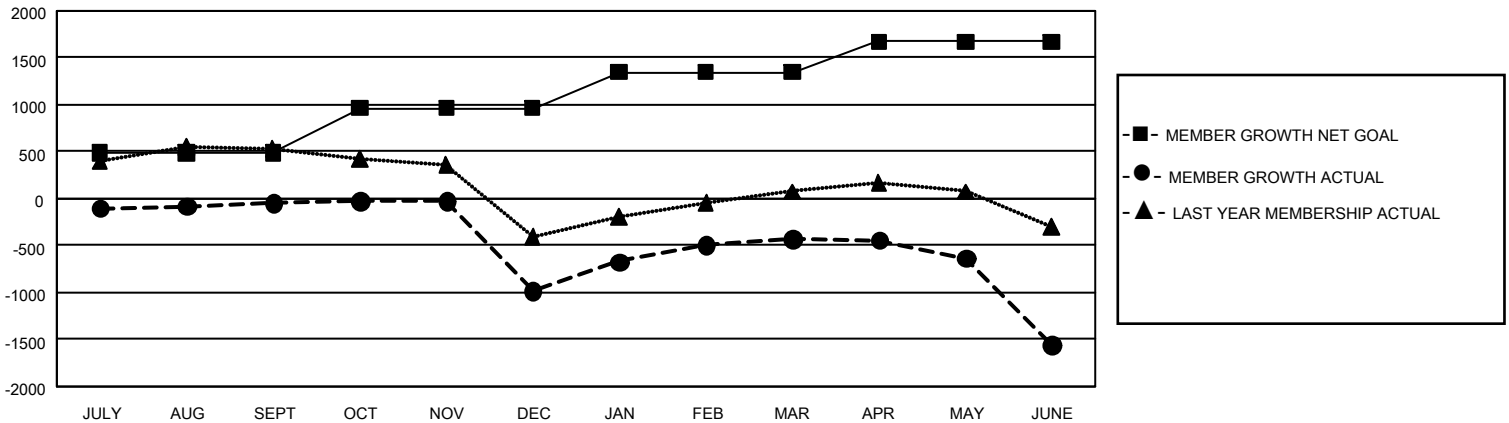
REPORT DOES NOT INCLUDE CLUBS IN UNDISTRICTED AREAS.

Clubs				Members			
RESULTS FOR 2019-2020				RESULTS FOR 2019-2020			
QUARTER	NEW CLUB GOAL	NEW CLUBS	DROPPED CLUBS	QUARTER	MEMBER GROWTH NET GOAL	MEMBER GROWTH ACTUAL	DROPPED MEMBERS ACTUAL (including transfers)
JULY/AUG/SEPT	51	10	4	JULY/AUG/SEPT	1,455	713	690
OCT/NOV/DEC	36	7	30	OCT/NOV/DEC	1,440	451	1,374
JAN/FEB/MAR	33	6	1	JAN/FEB/MAR	1,155	978	294
APR/MAY/JUNE	30	3	2	APR/MAY/JUNE	975	586	1,661

GOALS AND ACTUAL NEW CLUBS CUMULATIVE



GOALS AND ACTUAL MEMBERS CUMULATIVE



DROPPED CLUBS: 36	450 CLUBS OF 690 ADDED 1 OR MORE NEW MEMBERS	<u>GENDER DISTRIBUTION</u> MALE 18,532 (82.31%) FEMALE 3,983 (17.69%)
<u>DROPPED MEMBERS</u> DECEASED 111 CLUB CANCELLED 699 OTHER 3,208 <hr/> TOTAL 4,018	CLICK HERE FOR CUMULATIVE MEMBERSHIP DATA	TOTAL FAMILY UNIT MEMBERS 7,293 FAMILY MEMBERS PAYING HALF DUES 3,831